

TV Teens too Watch

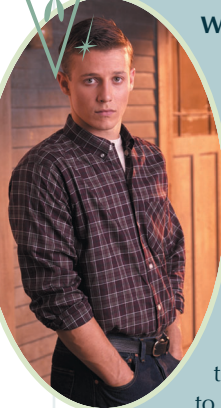
Who: WILL ESTES and BRITTANY SNOW

Where: *American Dreams* on NBC
When: Sundays, 8-9 p.m./ET

What: Back to the future, baby! Set in Pennsylvania, *American Dreams* takes place during the early 1960s when Meg (Snow) and JJ Pryor (Estes) are teens growing up during a time of change. (Hello, color TV wasn't even an option yet!)

Both siblings rebel against their father's wishes. Meg yearns to be a dancer on Dick Clark's *American Bandstand* (think *TRL* three decades earlier!), while star athlete JJ quits the high school football team despite a possible Notre Dame scholarship. Sure, it's a time warp, but *American Dreams* proves that the more things change, the more they stay the same.

Why: Ms. SPEARS isn't the only Brit' who can shake it! Wide-eyed Snow's on-screen energy is infectious. It's no wonder her character is chosen as a featured dancer. And Estes? He's absolutely charming.

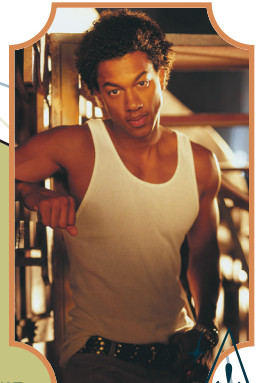


Who: WESLEY JONATHAN and AMANDA BYNES

Where: *What I Like About You*
When: The WB Fridays, 8-8:30 p.m./ET

What: What's *not* to like?! When Holly (Bynes) is faced with being forced to move to Japan, she strikes up the perfect plan – move in with her older sis' Valerie (JENNIE GARTH) and Valerie's boyfriend (SIMON REX) in New York City. Upon her arrival, all havoc breaks loose as her kind-natured, sweet-talking attempts backfire. After recruiting her friend Gary (Jonathan) to help win them over, she is still at a loss for ideas. Luckily, Valerie has one, and it turns out the two sisters think quite alike.

Why: They're comedy veterans. Jonathan is best known as Jamal on NBC's *City Guys*. As for Bynes, she's an icon at Nickelodeon, where she first began her career on *All That* and *The Amanda Show*.



Who: EMILY VANCAMP and GREGORY SMITH

Where: *Everwood* on The WB
When: Mondays, 9-10 p.m./ET

What: Combine *Dawson's Creek's* quick-witted one liners with 7th *Heaven's* wholesomeness and you've got *Everwood*. This drama follows a widower father who moves his children from the Big Apple to a tiny town in Colorado after his wife's death. Ephram Brown (Smith) is forced to cope with his loss, make new friends, and deal with other typical teenage anxieties. Along the way, he meets the beautiful and popular Amy Abbott (VanCamp) who quickly becomes the object of his affection in this coming-of-age sitcom.

Why: Even J.LO would agree, these characters are "reeeeaaaal." It's refreshing to see two teenagers who look and act like actual teenagers. Both Smith and VanCamp have an uncanny ability to act natural.



BRITTANY: NBC/CHRIS HASTON; WILL: NBC/PAUL DRINKWATER; WESLEY: THE WB/FRANK OCKENFELS; AMANDA: THE WB/RICHARD CARTWRIGHT; GREGORY: THE WB/JAMES SORENSON; EMILY: THE WB/JEFFREY THURNHUR